

DRAFT COPY



---

# **Dreamweaver FTP Setup**

**WaveNetworks.com Web Hosting Services**

**May 31, 2005**  
**#HLP 001**  
**Version 1.0 - DRAFT**

**Table of Contents**

**Summary** \_\_\_\_\_ **3**

**SETTING FTP in Dreamweaver** \_\_\_\_\_ **3**

DRAFT COPY

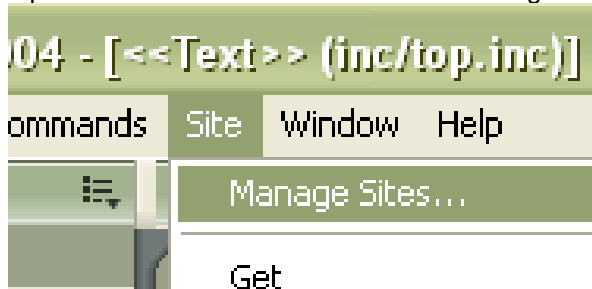
## Summary

Dream weaver is the defacto standard in web publishing software. Created by macromedia, it consists of an integrated development environment (IDE) that allows designers to have both text and graphical capabilities while developing their websites. This tutorial will show you how to set up dreamweaver to access your FTP account so you can publish to your website using dreamweaver.

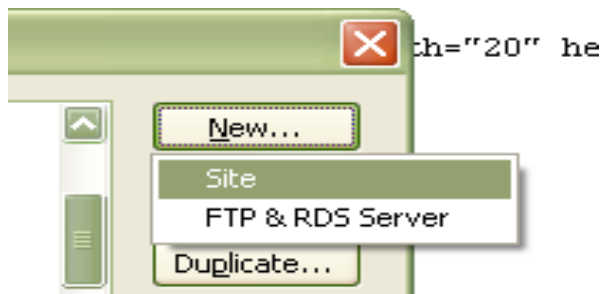
1. Already have an existing hosting account with wave networks and dns is set up properly.
2. Have created an ftp account and password within the wave networks console.

## SETTING FTP in Dreamweaver

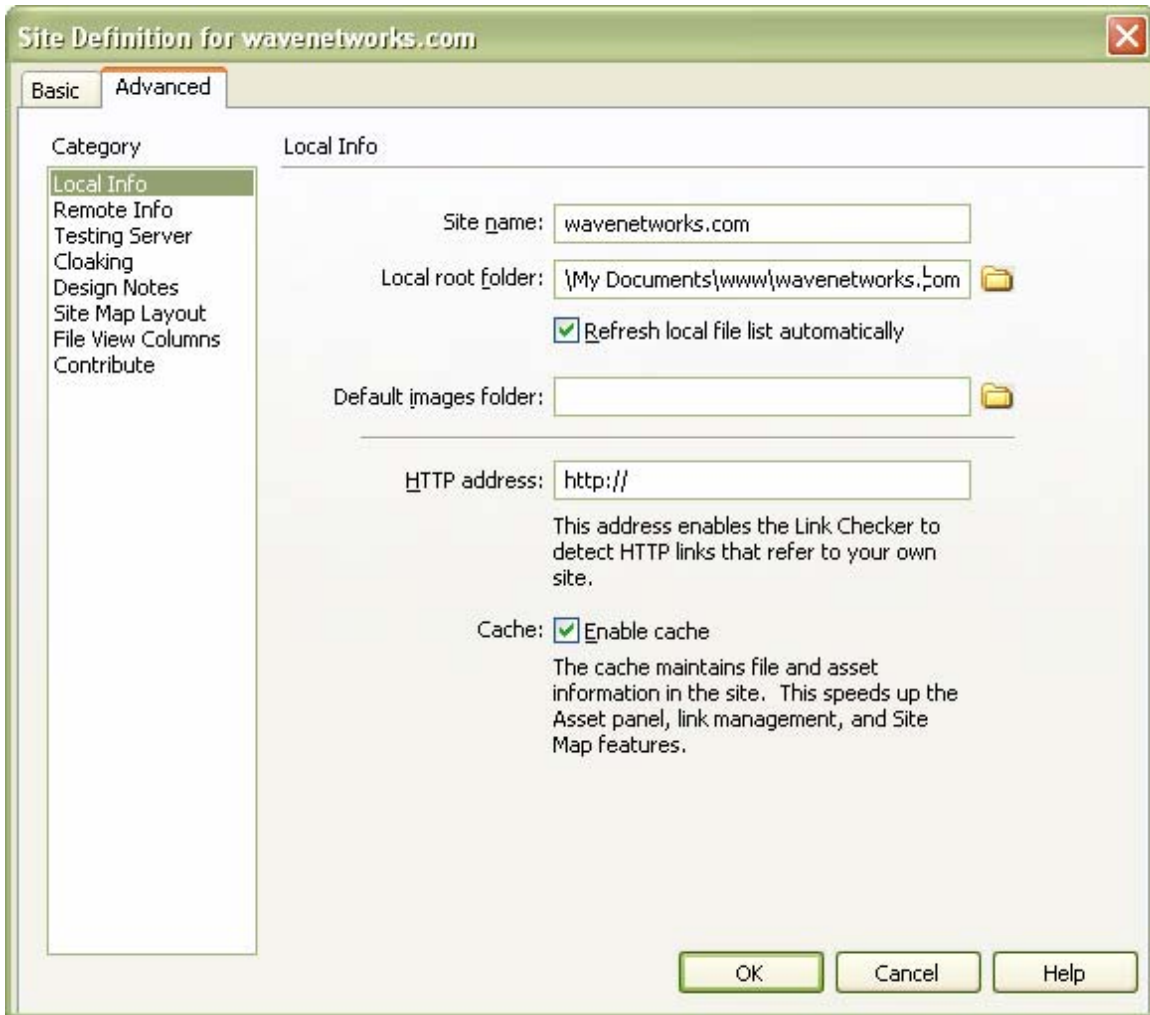
Open Dreamweaver and select Site > Manage Sites from the top menu:



Next Select New **SITE**



Once Selected you are brought to a site definition screen, If not already, you should select the advanced tab. Once their you can give your new site a name, I prefer to use the domain name as the name. Next you select the local root folder. This is the folder that you are going to save your files to on your machine. You can browse for an existing folder, I suggest creating a www\ folder that contains individual folders named the same as the site name. This helps keep you filesystem organized.



DRAFT COPY

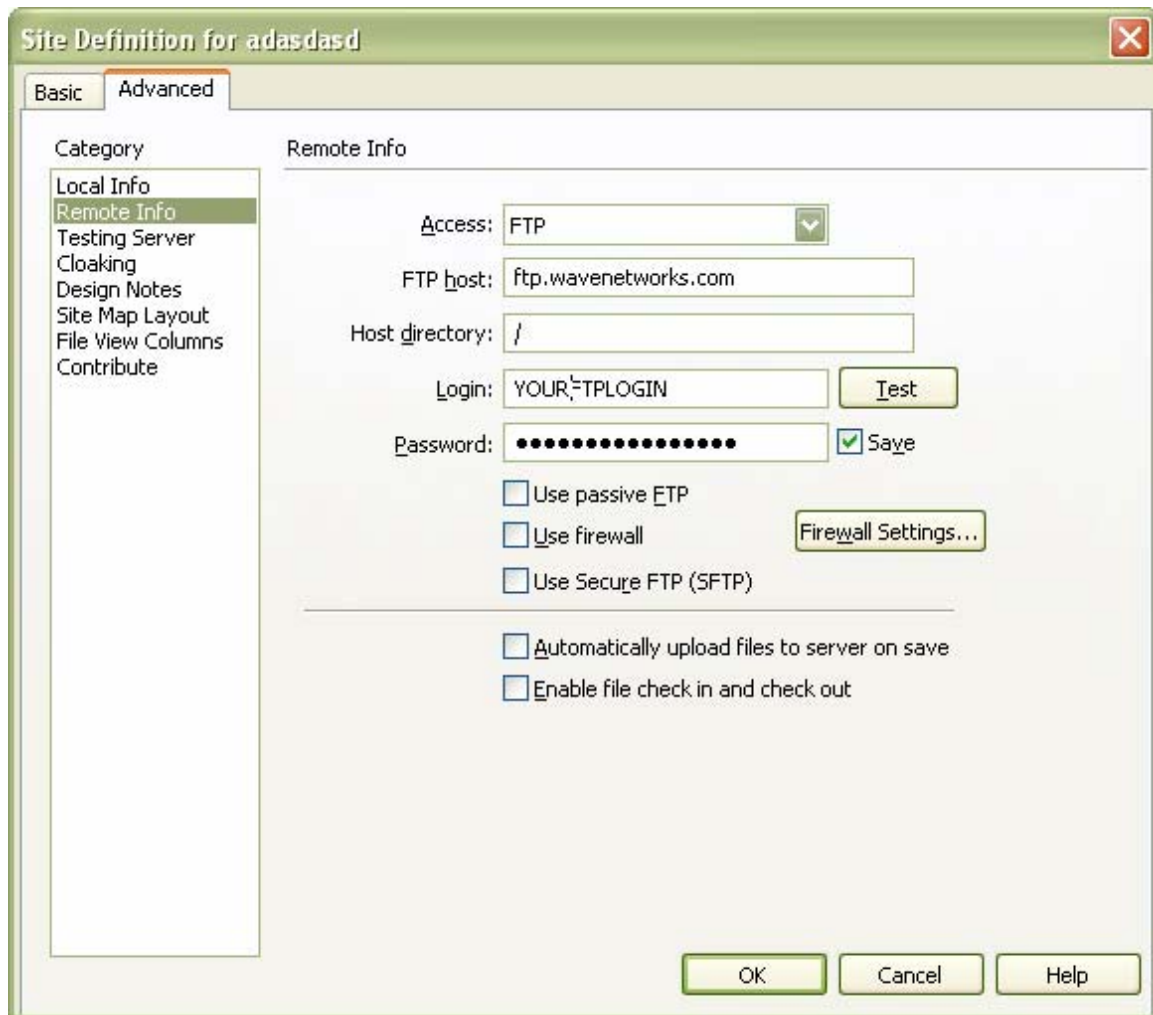
Next, select Remote info from the Category column to your left. Once selected select FTP from the drop down menu labeled Access. Once FTP is selected enter your ftp information as shown below.

FTP host: <ftp.wavenetworks.com>

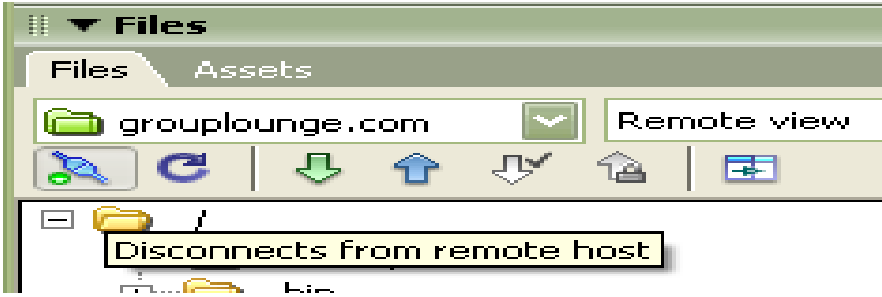
Host Directory: /

FTP Login: the login you created in the ftp section of your wavenetworks admin console, for this domain.

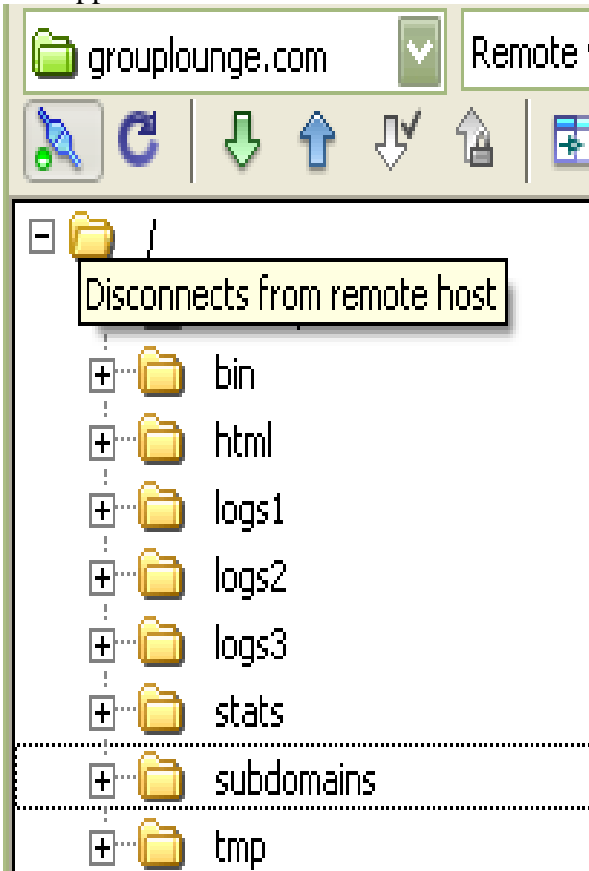
FTP Password: the password you created when creating the ftp login for this domain.



Select ok, you will then be taken to the dreamweaver main view. Once their find the file toolbox and select the connect icon



once connected you should see the icon change to green and soon a new set of file folders will appear like shown below.



Your web root is located in /html/ , once you have created your domain there will be a sample page there called index.html, this will be the first page read by the webserver when people navigate to www.yourdomain.com.

Any questions contact  
**support@wavenetworks.com**